

SWIVEL FOR ELEVATION OF INTAKE SCREENS



Applications

The Swivels allow for easy access to underwater installed screens.
The Swivels permit a regular inspection of the screens and ensure a proper operation.
The Swivels should be installed immersed.

Function :

Two stainless steel rings separated by a teflon gasket, are supported by two flanges, permitting a rotation of the 2 elbows,

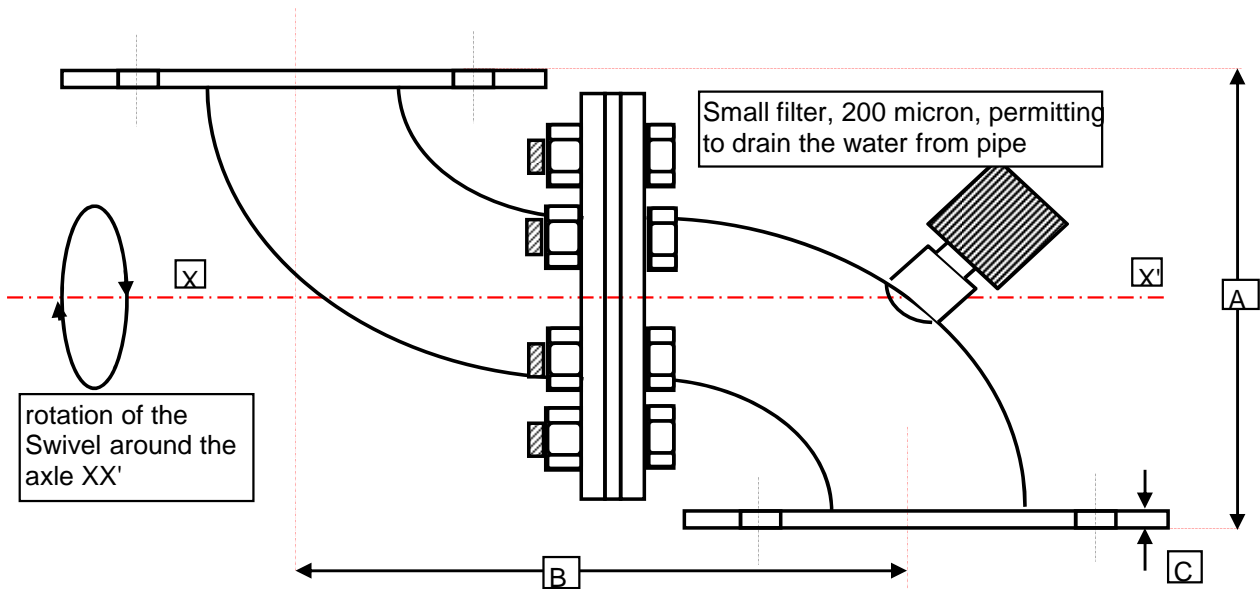
Installation :

The Swivel must be located under water.

A winch with a wire should be installed, adapted to the size of the Intake Screen and to the length of the suction pipe. The wire to pull in the same direction as the flanges of the Swivel, in such a way that the turning flanges are not damaged.

Materials of Construction :

Stainless Steel 304L , option 316L



MODEL	A	B	C	Connecting flange		Weight kg
				holes: numb*diam.	DN	
CARC 80	228	256	8	8*18	80	11
CARC 100	304	332	8	8*18	100	12
CARC 150	456	494	8	8*22	150	21
CARC 250	762	790	8	12*22	250	41
CARC 300	914	960	8	12*22	300	49
CARC 350	1066	1148	8	16*22	350	80
CARC 400	1220	1318	8	16*26	400	105