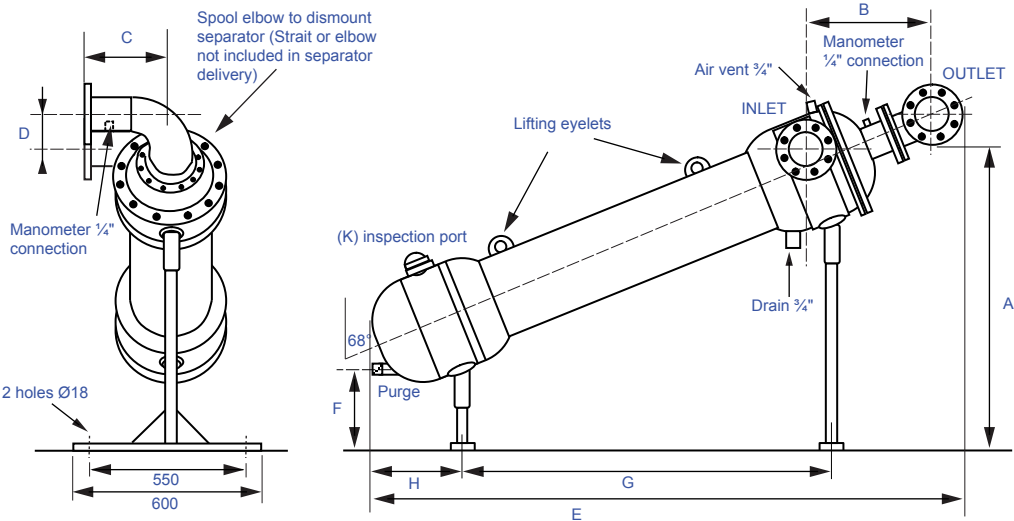
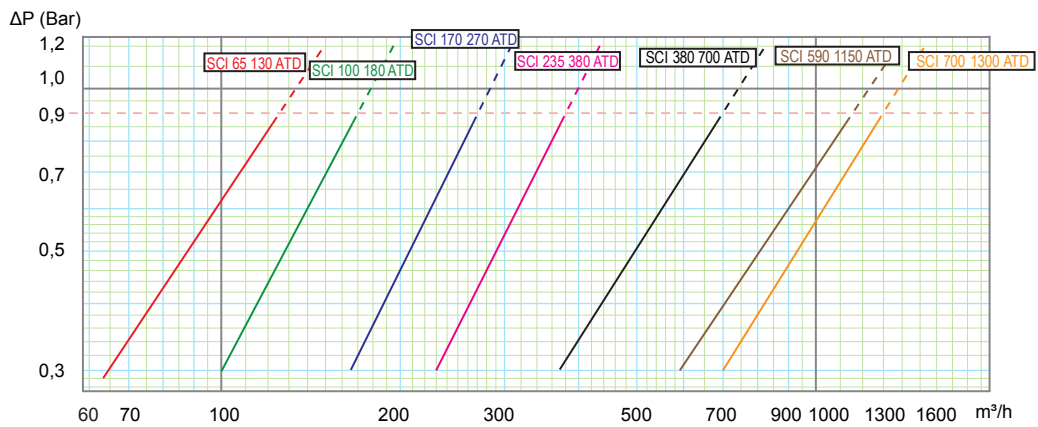


CENTRIFUGAL SEPARATORS DEMOUNTABLE HEAD MODELS

SCI - ATD Series



Model	Flow (m ³ / h)		Flow (l / mn)		ΔP (bar)		Maximum particle size	Purge size Threaded M
	min	max	min	max	min	max		
SCI 65 130 ATD	65	130	1067	2083	0.3	0.9	9 mm	1½"
SCI 100 180 ATD	100	180	1500	2833	0.3	0.9	9 mm	1½"
SCI 170 270 ATD	170	270	2750	4500	0.3	0.9	9 mm	1½"
SCI 235 385 ATD	235	385	3833	6333	0.3	0.9	9 mm	1½"
SCI 380 700 ATD	380	700	6167	11667	0.3	0.9	9 mm	2"
SCI 590 1150 ATD	590	1150	9833	19167	0.3	0.9	9 mm	2"
SCI 700 1300 ATD	700	1300	11667	21667	0.3	0.9	9 mm	2"

GENERAL SPECIFICATIONS AND DIMENSIONS IN mm

Maximum working pressure/temperature: 10 bar at 70° C, for models SCI 65 130 ATD to SCI 380 700 ATD
10 bar at 40° C, for models SCI 590 1150 ATD and SCI 700 1300 ATD

Separators are manufactured to European norms PED 97/23/CEE. Basic models to liquid Group 2, Chart 4 Art. 3 §3. Higher levels upon request

Model	A	B	C	D	E	F	G	H	Inlet / Outlet Flange PN10 or PN16	Weight kg	Collection Chamber Volume	K
SCI 65 130 ATD	1110	670	300	190	2070	510	1120	251	DN 100	200	23 liters	80*120
SCI 100 180 ATD	1290	934	365	280	2760	510	1475	310	DN 125	270	58 liters	80*120
SCI 170 270 ATD	1290	934	365	280	2760	510	1475	310	DN 150	290	58 liters	80*120
SCI 235 385 ATD	1480	1208	430	364	3235	510	1596	400	DN 200	375	62 liters	100*150
SCI 380 700 ATD	1670	1500	510	458	3830	510	1684	601	DN 250	555	117 liters	100*150
SCI 590 1150 ATD	2100	1750	560	560	4200	600	2060	660	DN 300	800	350 liters	100*150
SCI 700 1300 ATD	2400	1850	620	670	4450	600	2340	700	DN 350	1110	520 liters	100*150